

GLOBAL NETWORK GOLD FORUM EVENT 2018

Community Engagement (St.7): Nasarang project conducted with teenagers. Communication (St. 2): Educational video – how to implement and communicate to patients.

Healthcare Service Name: SMG-SNU Boramae Medical Center
Country/Region: South Korea
Self-Audit Score 2016 (Standards 1-8): 132
Size/ number of beds: 763
Number of Staff: 1,750

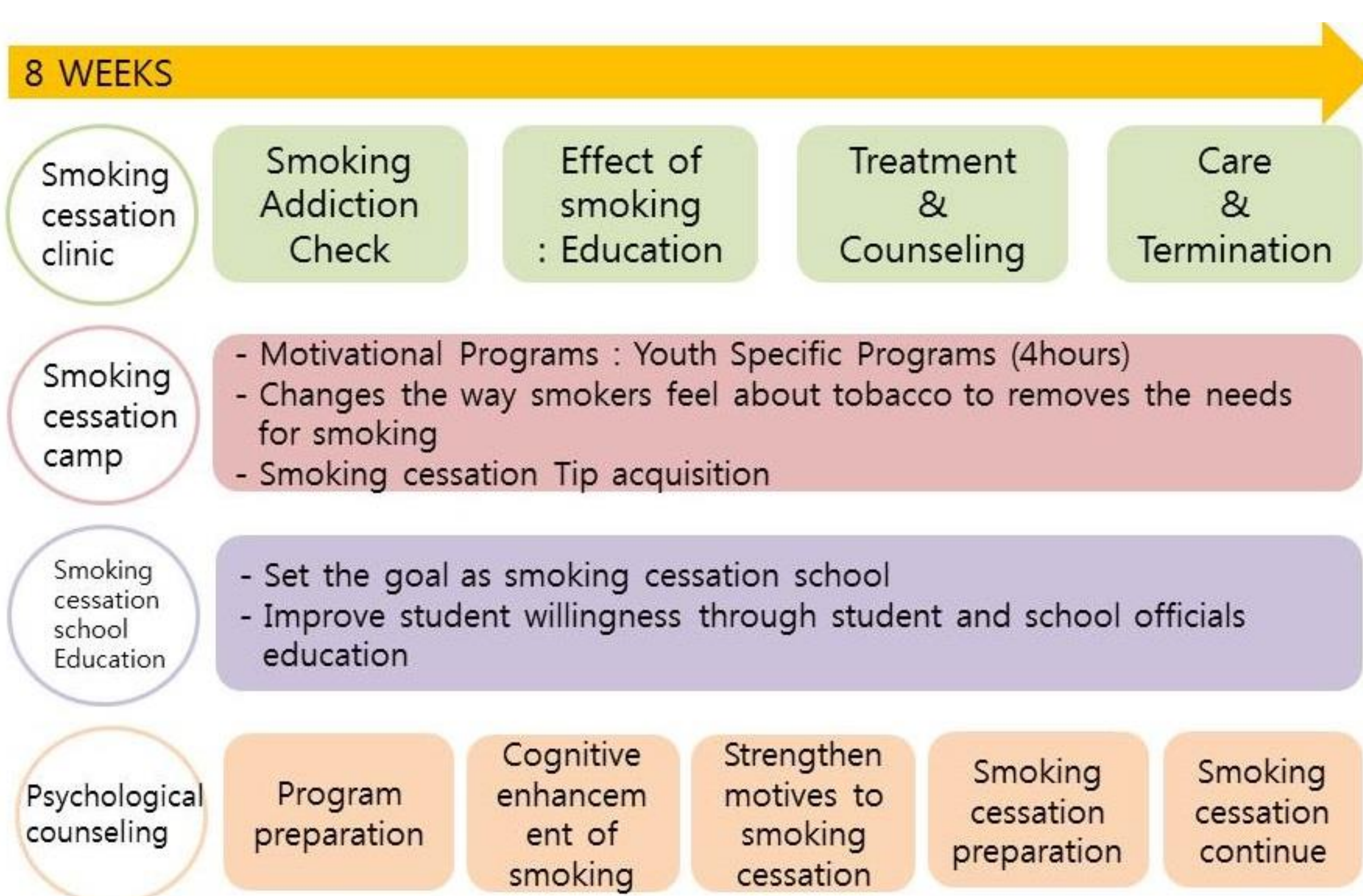


Specialisation (Departments, diagnosis): Pulmonary and critical care medicine, Cardiology, Gastroenterology, Haematology and medical oncology, Endocrinology, Nephrology, Infection disease, Surgery, Thoracic surgery, neurosurgery, Orthopedicsurgery, Plastic surgery, OB/Gyn, Paediatric, Dermatology, Urology, Ophthalmology, Otorhinolaryngology, Neuropsychiatry, Neurology, Anaesthesiology, Emergency medicine, Family medicine, Radiology, Nuclear Medicine, Laboratory medicine, Pathology, rehab medicine, Dentistry

Introduction

Smoking is an important threat to a personal health for teenagers. also smoking is not only drug dependency such as nicotine, but also a medium for social relationships and a means of emotional expression. Therefore, we aim to minimize the occurrence of various diseases caused by smoking and contribute to health promotion through comprehensive approaches such as personal and environmental aspects.

Method



Result

The attendance rate of 17 participants was 95%. For among these, the rate of quitting smoking for more than 10 days was 65%, and the rate of quitting smoking for more than 30 days was 18%.

Conclusion

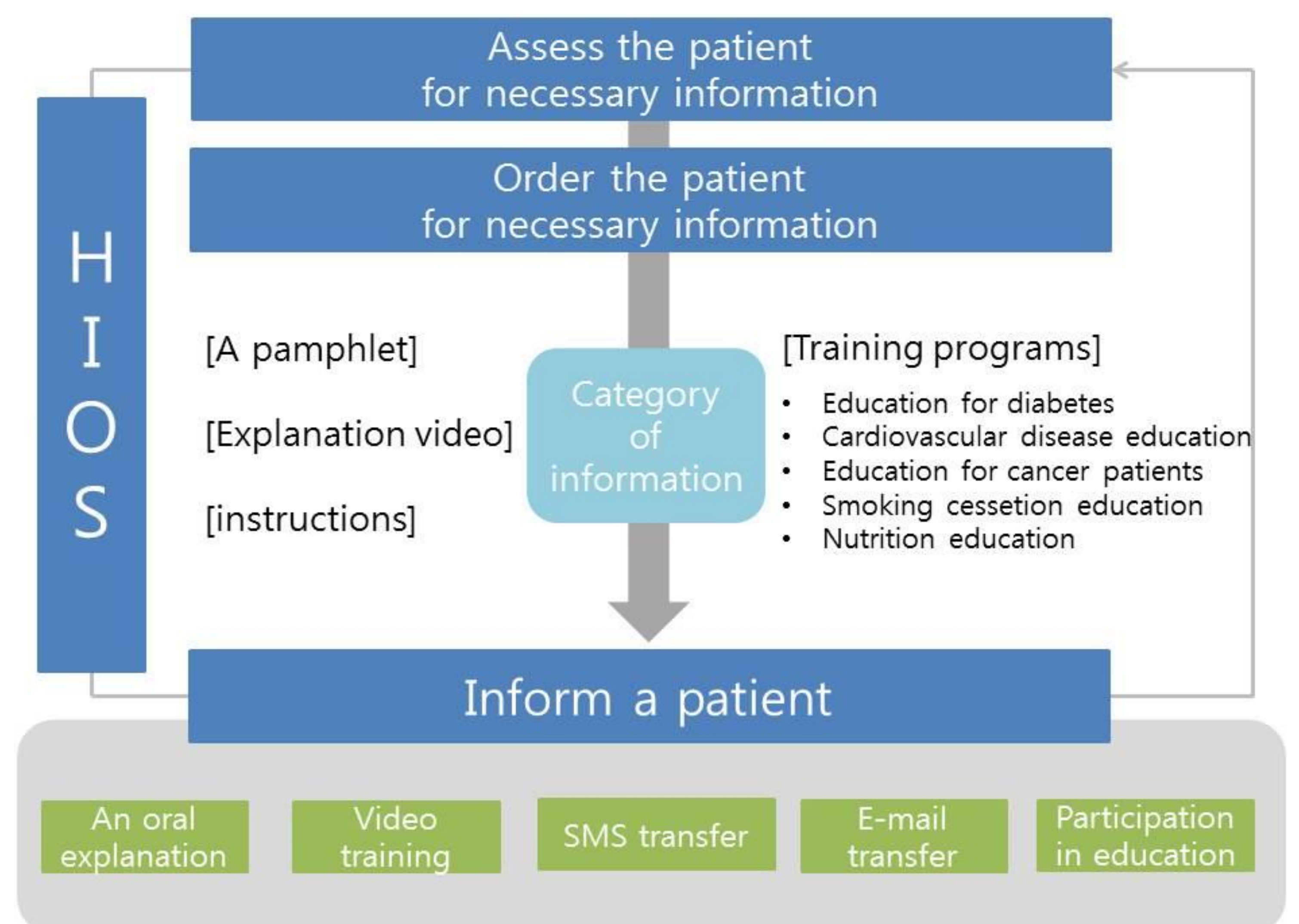
It's hard to say that smoking teenager has succeeded through an eight-week program. However, the program helped smoking teenager recognize and implement the need to quit smoking by sharing their physical and psychological status with medical staff and professional counselors. We concluded that applying this program to other smoking teenagers can minimize the incidence of various diseases caused by smoking and contribute to improving health.

Contact details:

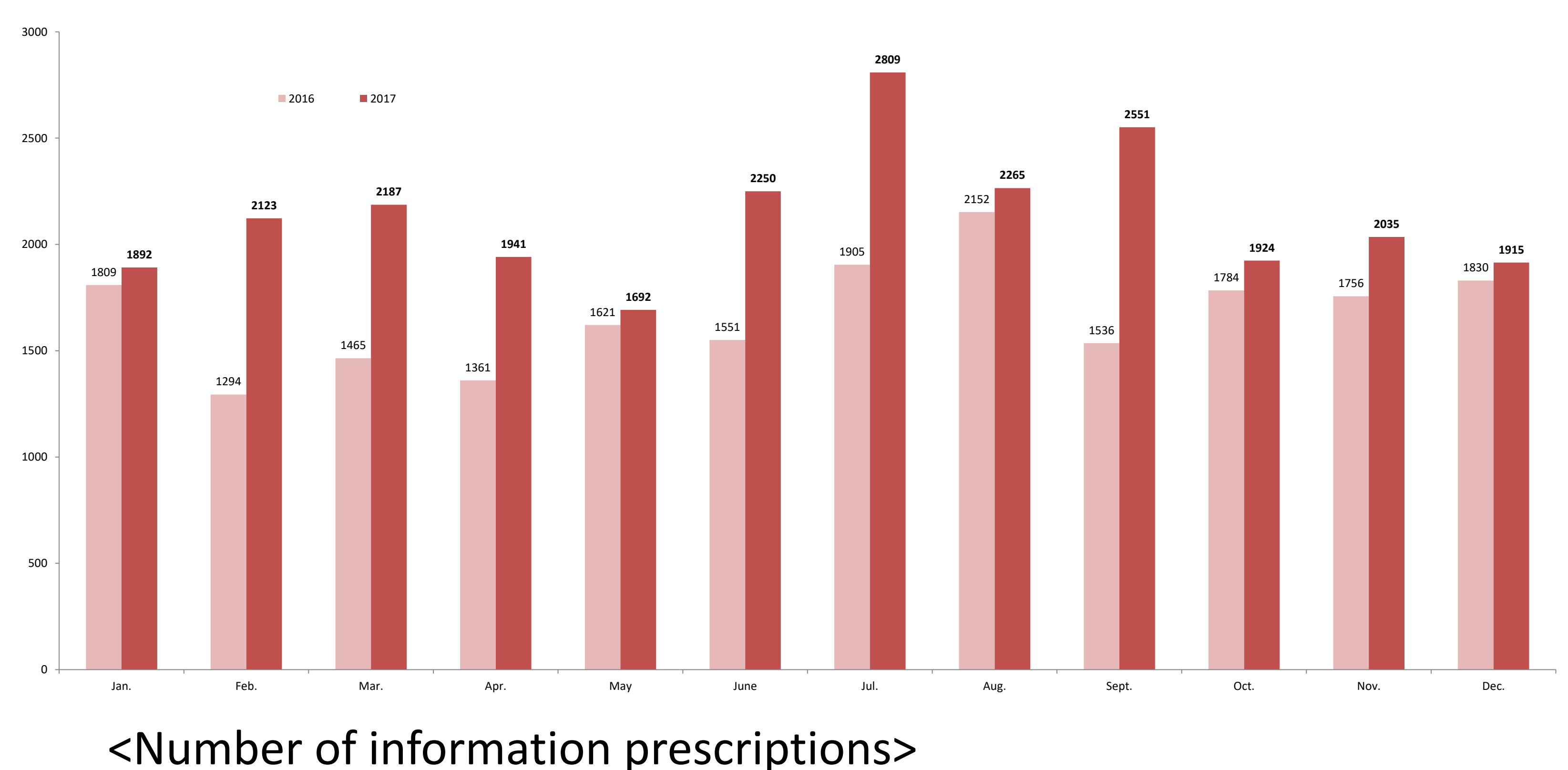
Introduction

Boramae medical center provides patients and family who need surgery, intervention, and treatment with videos reducing their anxiety and having a positive influence for adaptability and resilience.

Method



Result



Conclusion

A education video program helped medical staffs save time and improve the business efficiency. Also, patients were able to improve understanding of disease and treatment and manage their health for themselves by using the video program.